

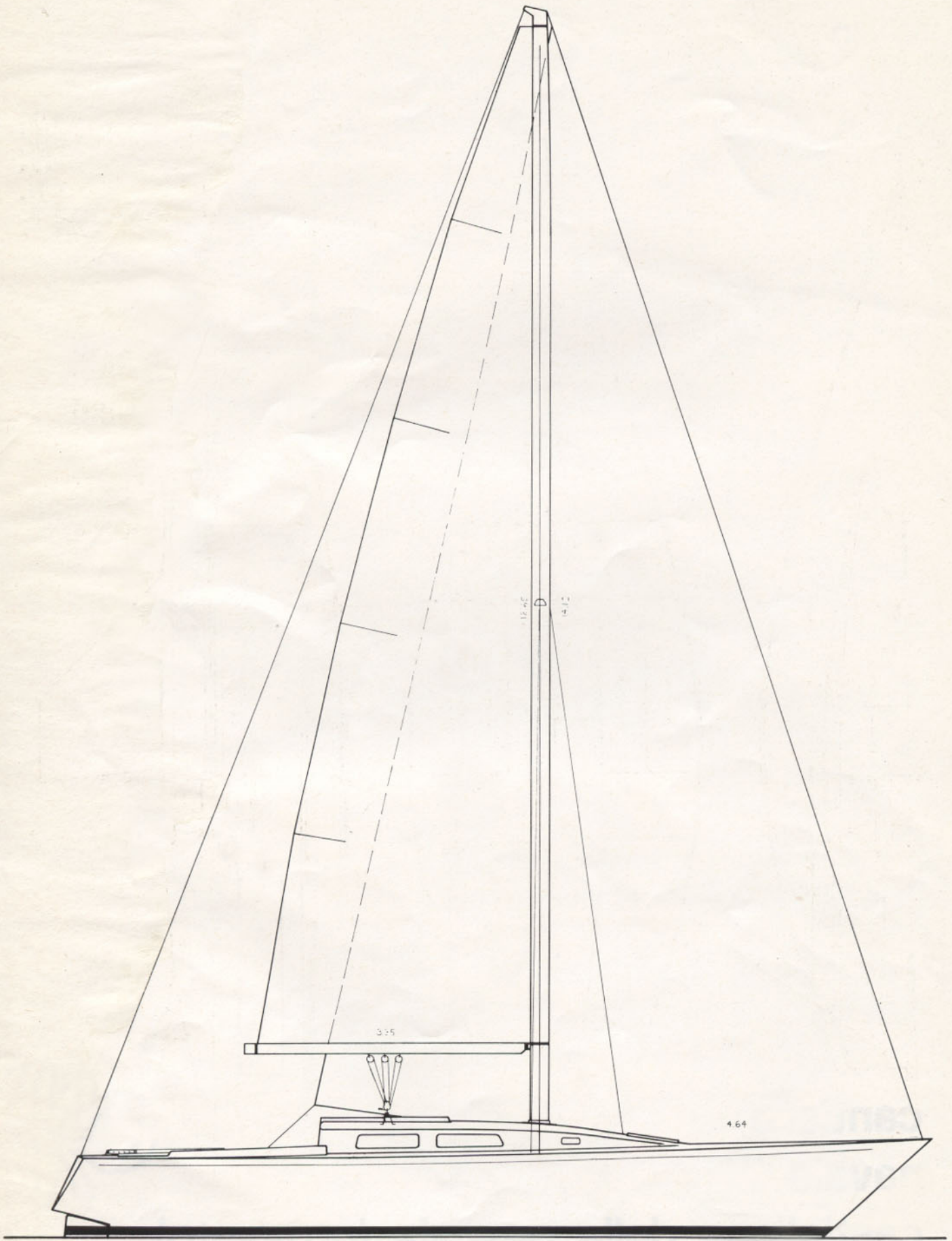
**cantiere**

**navale 71**

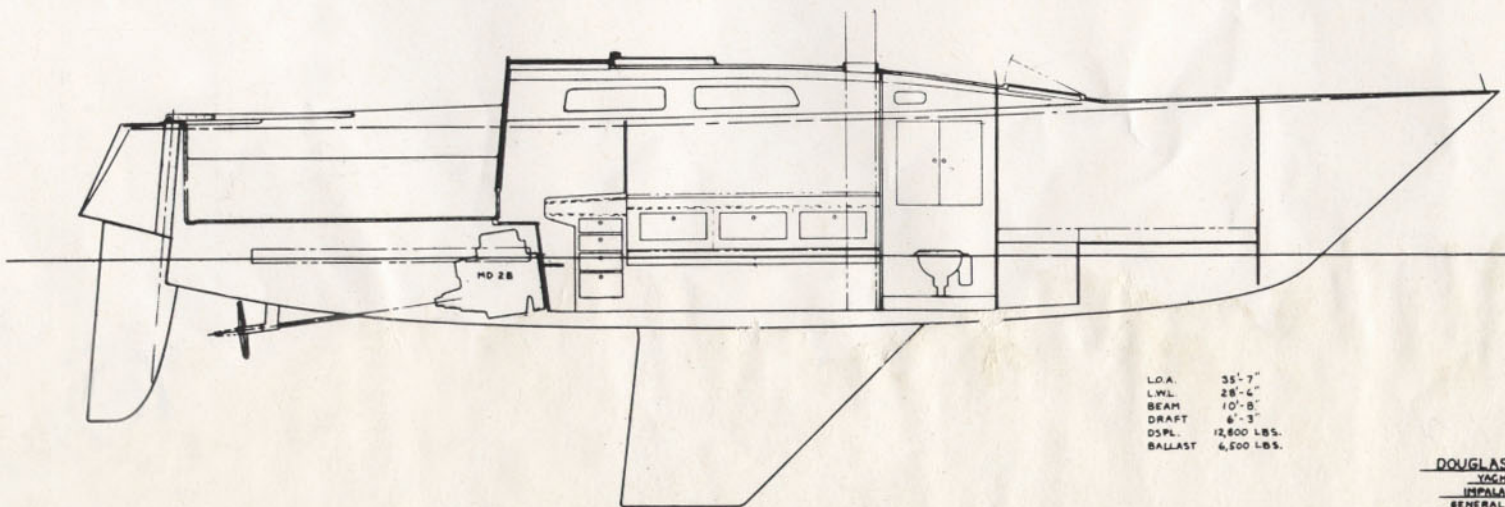
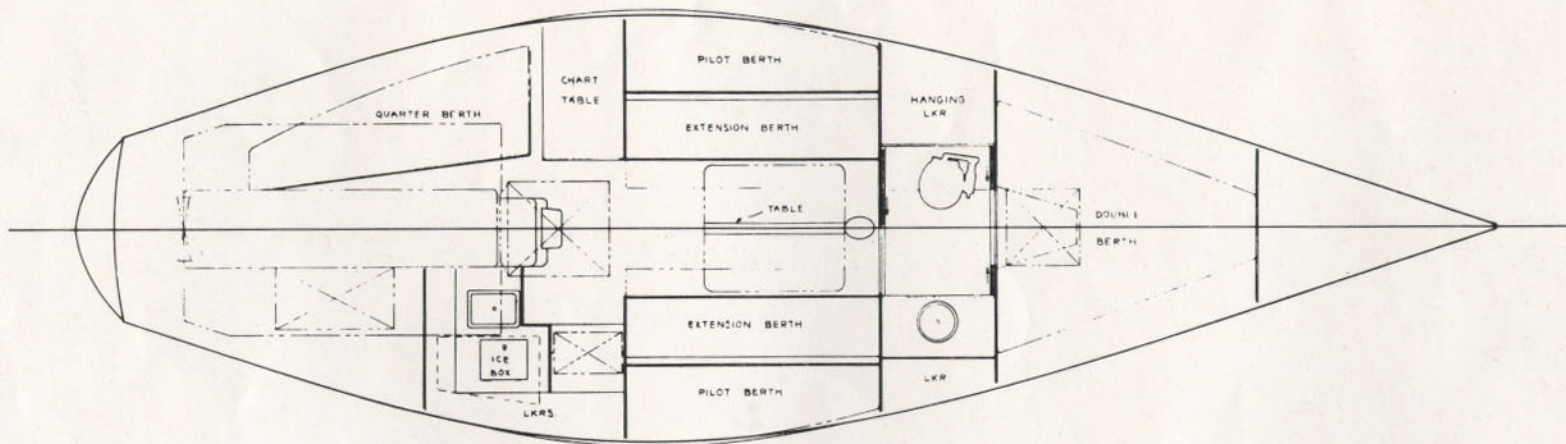
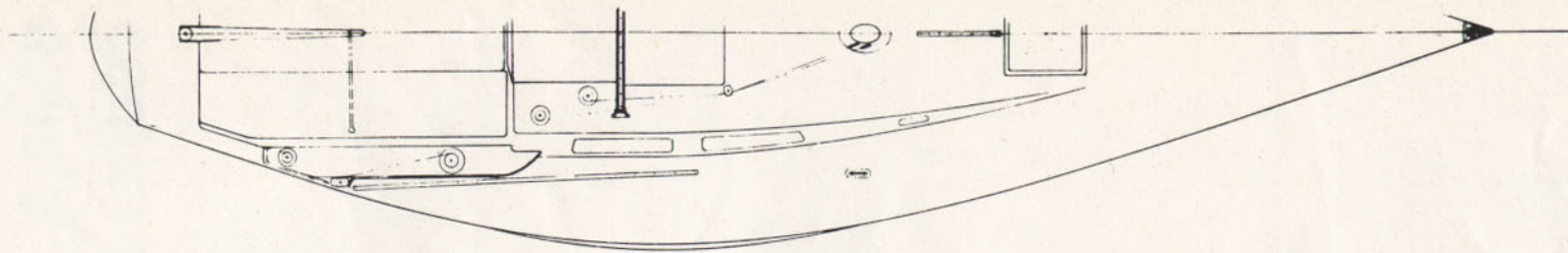
**castiglione della pescaia (grosseto)**

**telefono 54131**





IMPALA 36' ONE-TON



L.O.A. 35'-7"  
 L.W.L. 28'-6"  
 BEAM 10'-8"  
 DRAFT 6'-3"  
 DSPL. 12,800 LBS.  
 BALLAST 6,500 LBS.

DOUGLAS PETERSON  
 YACHT DESIGNER  
 IMPALA 36 ONE-TON  
 GENERAL ARRANGEMENT  
 3/4" = 1' D.M. 3-16-78 DWG 17-E